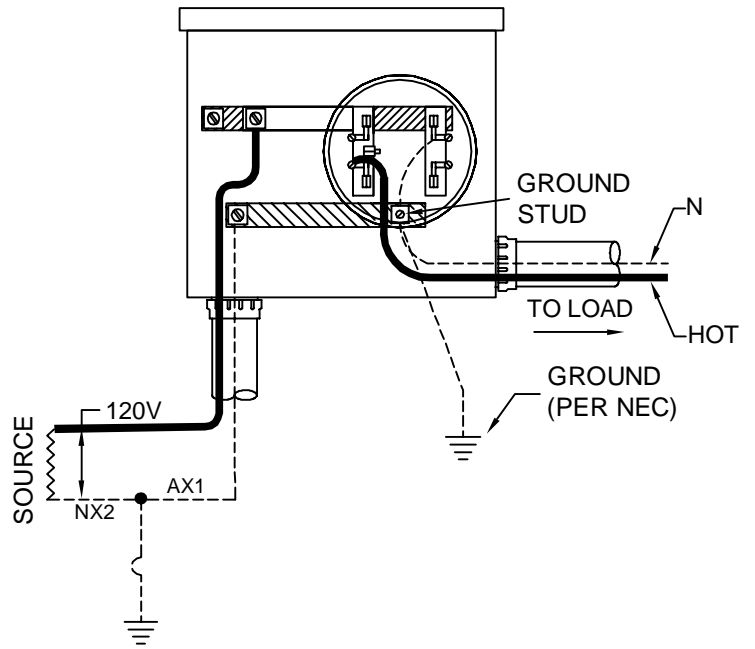


TYPE S
2 WIRE SINGLE PHASE 120 VOLTS



TYPE S
2 WIRE SINGLE PHASE 120 VOLTS

FOR REFERENCE ONLY:

REQUIRES PRIOR WRITTEN ENGINEERING APPROVAL

NOTES:

1. LOAD AND SUPPLY WIRES SHALL NOT CROSS IN THE METER SOCKET.
2. 100 AMPS ONLY.

ENTERGY SERVICES, INC.			
WIRING DIAGRAM CONNECTIONS FOR 120V (TWO WIRE) SELF CONTAINED METERS			
APPROVED BY:	JRH	DATE:	04/03/2013
CHECKED BY:	JED	SCALE:	NONE
DRAWN BY:	krich95		
		No. D9-1	
		PLOT	1=1 SH. 1 OF 1

1	04/13	NEW DRAWING	JED	
NO.	DATE:	REVISION	BY:	APPR:

